

POPULAR
NDEBELE DESCRIPTIONS
RELATING TO CATTLE COLOUR
PATTERNS AND
HORN SHAPES

by J. W. I. Brownlee

**POPULAR NDEBELE DESCRIPTIONS RELATING TO CATTLE COLOUR
PATTERNS AND HORN SHAPES**

by J. W. I. Brownlee

At the outset I would like to stress that the popular name for certain colour patterns varies from district to district within the province of Matabeleland. Bearing this in mind, I have endeavoured to arrive at an acceptable description which covers the widest possible area.

These records, which took some considerable time to compile, as accuracy was paramount, would not have been possible without the help of those having an intimate knowledge of the subject.

I acknowledge with sincere thanks assistance from the following, prior to and during the recording exercise: the late C. F. Brownlee Walker, P. Moyo, J. Hlabangana and "Old Timers" of the Tjolotjo T.T.L.

For the checking of photographs and their descriptive names, for accuracy: W. H. H. Nicolle, N. Robertson, E. C. W. Trollip, D. F. White, C. Ndhlovu and B. Fuyane.

CATTLE COLOUR PATTERNS

Note 1.

In certain instances the hides were favoured by Matabele regiments for their shields. These are described under the appropriate patterns.

Note 2.

The change of name with sex and age is as follows, unless otherwise stated, e.g.:

Male — Inkone,
Cow — Inkonekazi,
Heifer — Inkonzana,
Male — Inco,
Cow — Incokazi,
Heifer — Incokazana,
and so on.



1. INKONE

Broken white topline, with white speckled head, tail and switch. Broken white on belly and legs. Dark unbroken side panels of either red or black.

Animals bearing these markings made up the Royal herd of Chief Mzilikazi, their possession by commoners being disallowed.



2. IGQWAGE

Very similar to Inkone, but the line between white and red is far more defined with an absence of speckle.



3. IWABA

Cow — Iwasakazi. Heifer — Iwasazana. Black and white similar to a Friesland, the white patches being larger than the black. This pattern was favoured for shields by the Insukamini regiment.



4. ILUNGA

Black and white similar to Iwaba, but in this case the black patches are larger than the white.

Favoured by the Umcijo regiment for shields.



5. IQAMULE

Black or red with a white band right around the middle-piece.



6. IBAMU

Similar to Iqamule, but the white middle band is much wider.



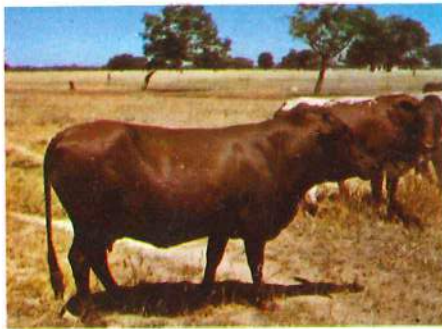
7. EMNYAMA

Cow — Inzimakazi. Heifer — Inzimazana. Black only.



8. EBOMVU

Cow — Inhlamvukazi. Heifer — Inhlamvazana. Red only.



9. UBEENDE

Rich cherry red of Sussex cattle, or the colour of a bisected spleen.



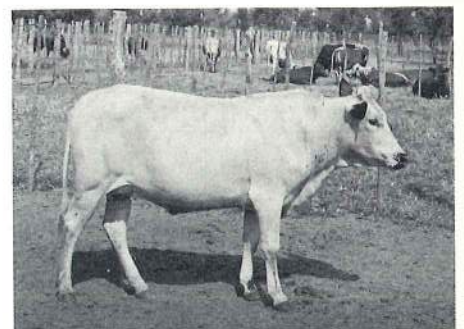
10. INZOTO

Dark red with a blackish sheen, not having the richness of red as in Ubende. The animal shown is in fact Inzotokazi, eli Jolikazi because of the white tail switch.



11. IJOLI

Red or black on entire body and legs, but having a white tail brush.



12. EMHLOPE

Cow — Umhlopekazi. Heifer — Umhlotshazana. White only. Dark pigmentation of the ears, muzzle and points is, however, permissible.



13. USIPO

Strawberry Roan—a red background peppered with white. Similar to the roan Shorthorn.



14. INCO

Red and white blotch in many ways similar to the Ayrshire marking. Favoured by the Imbizo regiment for their shields.



15. INSUNDU

Blackish brown or black over brown, the brown being predominant.



16. UMDAKA

Dun only, tending to be dark.



17. IGANU

Golden dun, tending to yellow of Tuli cattle.



18. ISIQUNGA

Light yellow.



19. INTENJANE

Dun or yellow intermingled with white.



20. UMNEMBEZI

Cow — Umnembezikazi. Heifer — Umnembezana. Red with ill-defined black stripes; brindle. If however these stripes are darker the pattern is referred to as Ibidi.



21. IGQIZA

Black or red with white socks and tail brush.



22. IBUDUNGU

Red or black with completely white face. White marks are often found on other parts of the body, but the face is the focal point. The animal depicted could be described as Ibudungu eli Igqiza.



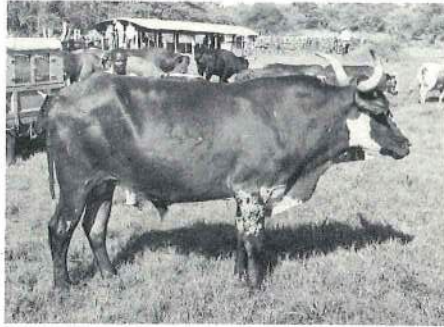
23. UNDUME

Black or red with a white blaze down middle of face, the red or black also being visible if viewed from the front.



24. UNCOTSHA

Red or black with white star on forehead.



25. IXALATI (ITLALATI)

Red or black with white half collar around throat. Generally white spots or blotches on belly, flanks, tail and brush.



26. INTUSI

Red with white flanks, belly and hind legs. Favoured by the Ihlati regiment for their shields.



27. IMPEMVU

Red or black with white covering muzzle, throat, forelegs, belly and hind legs.



28. UMZWAZWA

Dull dark brown, with tail brush and around muzzle black. Often a deeper brown along backbone. The colour of some Jersey cattle.



29. UMKANGO

Black or red animal with one mark only of grey or off-white on the side of its body. This mark can vary in size and/or location.



30. UNTUNIA (INTUNIA)

Predominantly white with a few red or dark red blotches anywhere on body and head, appearing to look like holes.



31. IGAMANXA

White with red or black head.



32. IHEHE (IYEYE)

Red or black with speckled white under belly.



33. UMHLAFUTO OR UDHLUBU

Red or black with numerous white speckles all over the body appearing very close together.



34. HWANQA

Red and white blotches of equal size covering the whole body.

Favoured by the Amazibalonkwe reiment for their shields.



35. ISOME

Blackish red and white and not red or black and white, which would be Inkone.



36. UHLAZA

White background peppered with small black blotches all over the body, giving the impression of a greenish appearance. Muzzle and ears generally black.



37. INHLEKWANE

White background covered with numerous black splotches that differ in size.

Favoured by the Isiziba regiment for their shields.



38. ISIBAWU

Blue roan. Black background peppered with white.



39. IHLOLANYAMA

Patches of blue roan on a predominantly white background.



40. INGWEVU

Blue black roan with white under belly. Similar to Isibawu regarding pattern peppering, but much darker.



41. UNTULO

Red overall with broken white on face and narrow white line from hump to end of backbone near tail. (Almost impossible to reproduce photographically unless taken from above.)



42. INALA

Cow — Inakazi. Heifer — Inakazana. Red background with speckled white markings along the flanks; very slightly white marked underline. Usually a star similar to Uncotsha on forehead.



43. UMHALATSHENI

Black and tan with small white markings on body, white tail with brush sometimes white.



44. IMPUNGA

A mixture of brown, red and white in minute speckles giving an impression of grey-blue-roan.



45. ILINQE

Black animal with white legs.

HORN SHAPES

Note 1.

In this section the name of the horn shape is given together with the animal's colour pattern.



2. INGUNGU

Horns curving inwards, the tips being slightly above the head. The animal shown is Ingungu engu Ntulo.



4. ISIPONDO

Horns sweeping back and down along sides of animal. The animal shown is Isipondo esilu Bende.



1. UMDHLODHLOMA

Horns growing straight up above head — can be longer than shown. This animal is Umdhlohloma Obomvu.



3. ISIQENGE

Horns curving back along body. The animal shown is Isiqenge esingu Mhalatsheni.



5. IGODHLA

One horn to cheek and the other away from head. The animal shown is Igodhla eli Bomvu.



6. INXELE

One horn slightly down and the other up and away from head. The animal shown is Inxele eli Bomvu.



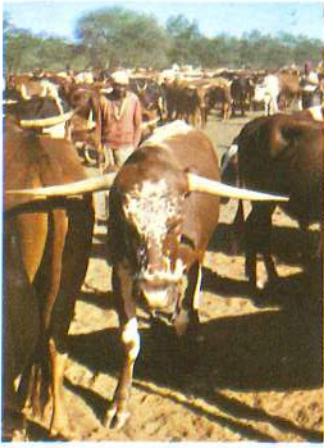
7. IGOBONGA

Like goats horns tending forward or backward. The animal shown is Igobonga eliyi Inco.



8. UCAYACAYA

Horns spread away from head with the tips curving backwards. The animal shown is Ucayacaya elili Ganu.



9. INCENCE

Horns straight out from side of head almost at right angles. The animal shown is Incencekazi eliyi Nkonekazi.



10. IBELE

Both horns down often curving in to touch cheeks. The animal shown is Ibelekazi elingu Mhlopekazi.



11. INGOQELA

Short horns curving out, forward, down with the tips pointing back, e.g., the cow with the crumpled horn. The animal shown is Ingoqelakazi eyi Nzimakazi.



12. UMLEMANE

Horns swept back, high over hump. The animal shown is Umlerane oyi Nkone.



13. INSIZWA

Natural poll. The animal shown is Insizwakazi elu Sipokazi.